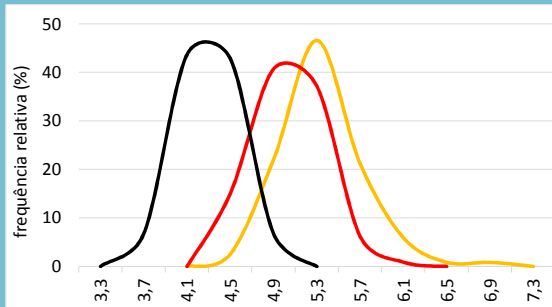
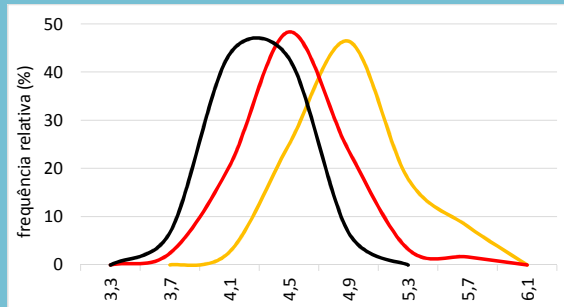
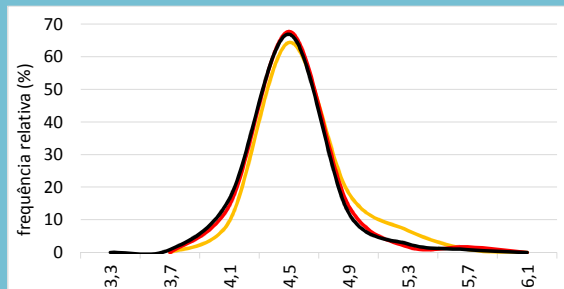
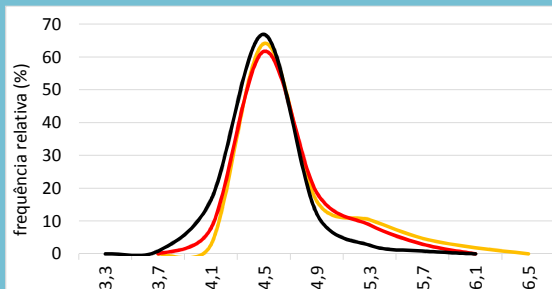
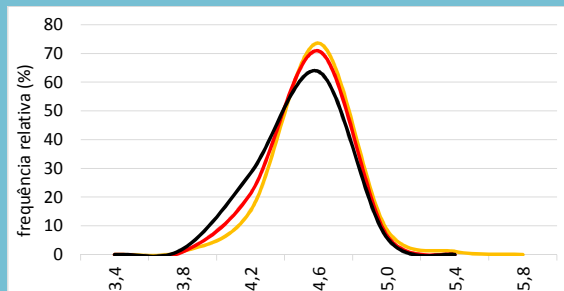
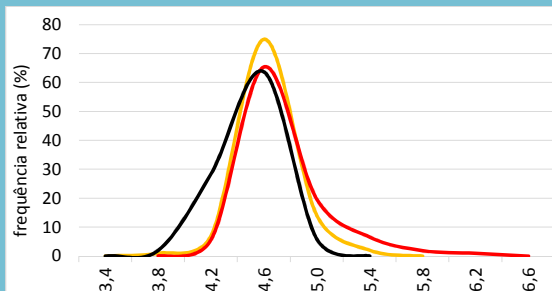
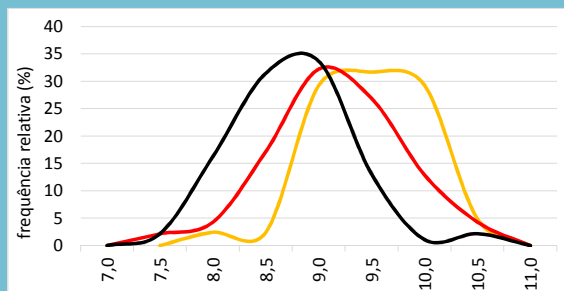
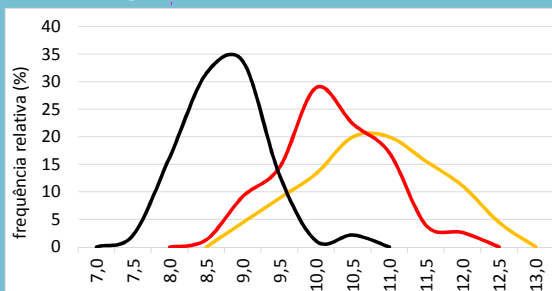


IPCA 2017
30/9/16 30/12/16 31/3/17

31/1/17 24/2/17 31/3/17

IPCA 2018

IPCA 2019

Selic mar/18

30/9/16 30/12/16 31/3/17
31/1/17 24/2/17 31/3/17

Mediana Agregado	IPCA			Selic
	2017	2018	2019	mar/18
30/9/16	5,07	4,50	4,50	10,75
30/12/16	4,87	4,50	4,50	10,00
31/1/17	4,69	4,50	4,50	9,50
24/2/17	4,36	4,50	4,50	9,00
31/3/17	4,10	4,50	4,28	8,63

Obs.: o formato dos gráficos, a partir de uma mesma base de dados, pode sofrer alterações em edições futuras, caso os intervalos sejam alterados em virtude da maior ou menor amplitude da distribuição. Os números nos eixos das abscissas são os limites superiores de cada intervalo.