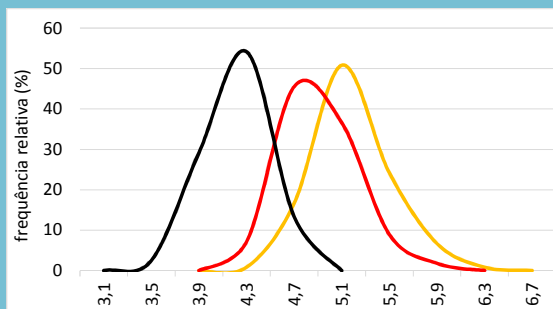
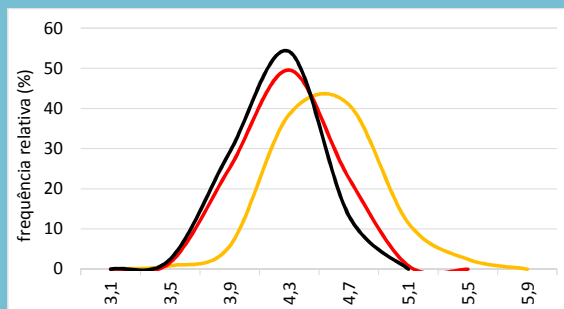
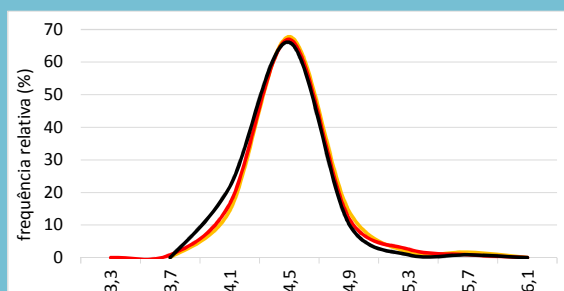
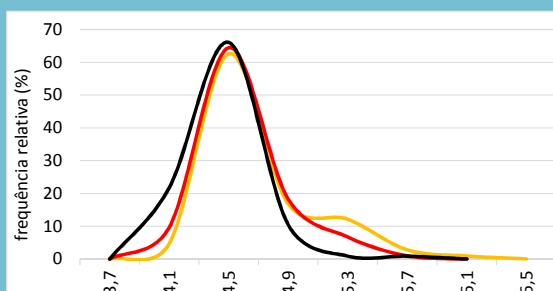
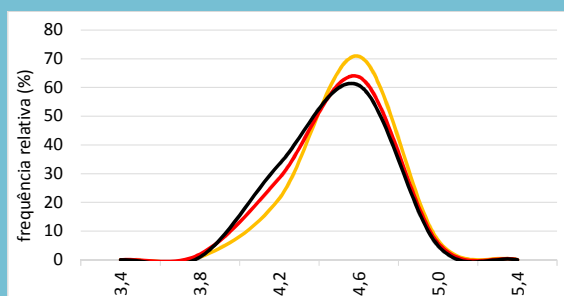
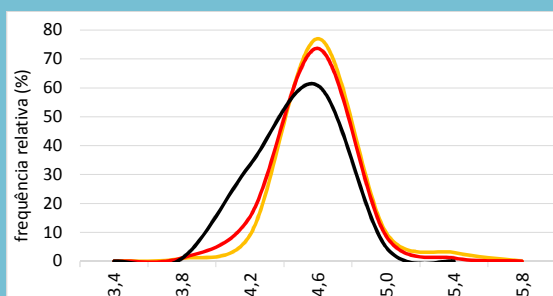
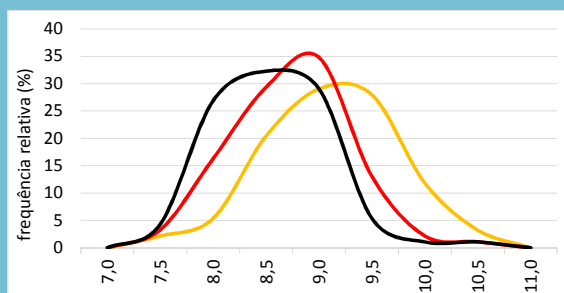
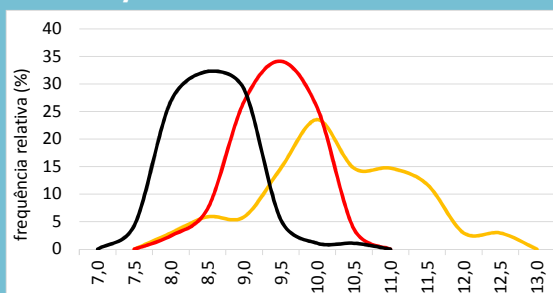


IPCA 2017
31/10/16 31/1/17 28/4/17

24/2/17 31/3/17 28/4/17

IPCA 2018

IPCA 2019

Selic abr/18

31/10/16 31/1/17 28/4/17
24/2/17 31/3/17 28/4/17

| Mediana Agregado | IPCA | | | Selic |
|------------------|------|------|------|--------|
| | 2017 | 2018 | 2019 | abr/18 |
| 31/10/16 | 4,99 | 4,50 | 4,50 | 10,00 |
| 31/1/17 | 4,69 | 4,50 | 4,50 | 9,25 |
| 24/2/17 | 4,36 | 4,50 | 4,50 | 9,00 |
| 31/3/17 | 4,10 | 4,50 | 4,28 | 8,75 |
| 28/4/17 | 4,03 | 4,30 | 4,25 | 8,50 |

Obs.: o formato dos gráficos, a partir de uma mesma base de dados, pode sofrer alterações em edições futuras, caso os intervalos sejam alterados em virtude da maior ou menor amplitude da distribuição. Os números nos eixos das abscissas são os limites superiores de cada intervalo.