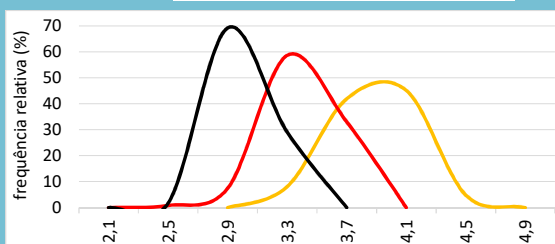
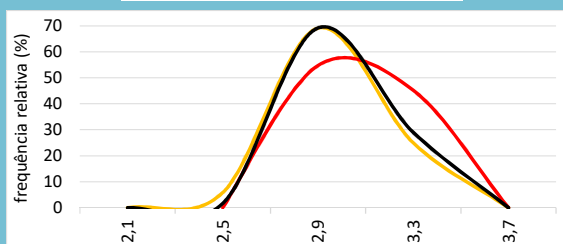


**IPCA 2017**

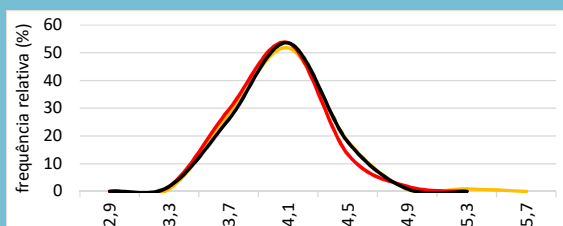
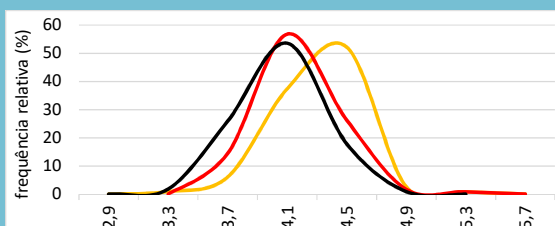
31/5/17 31/8/17 30/11/17



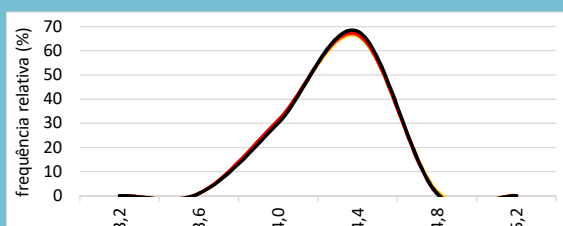
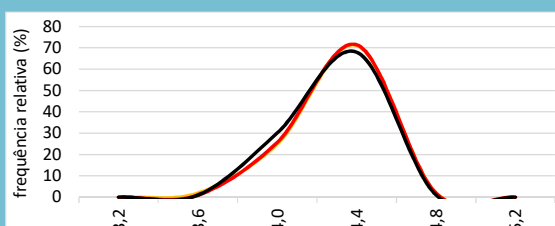
29/9/17 31/10/17 30/11/17



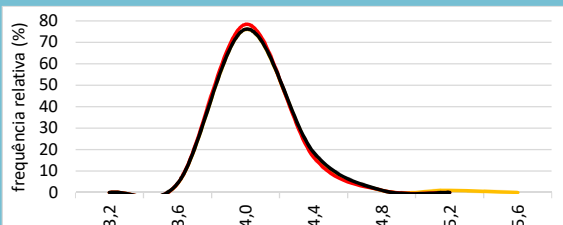
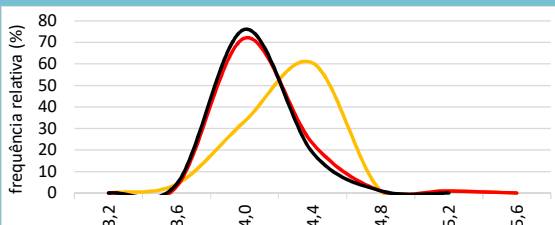
**IPCA 2018**



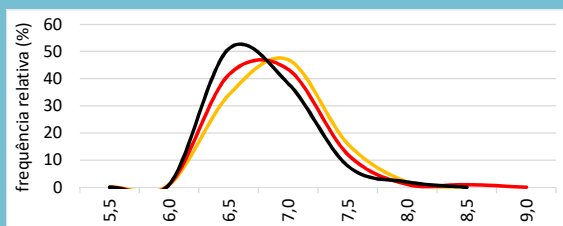
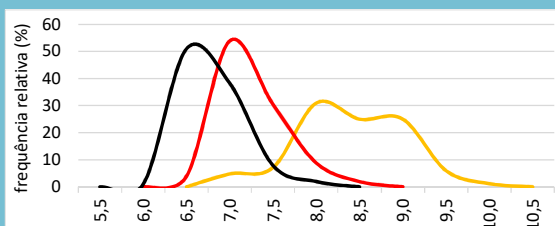
**IPCA 2019**



**IPCA 2020**



**Selic nov/18**



31/5/17 31/8/17 30/11/17

29/9/17 31/10/17 30/11/17

Mediana Agregado	IPCA				Selic
	2017	2018	2019	2020	nov/18
31/5/17	3,91	4,40	4,25	4,25	8,50
31/8/17	3,39	4,19	4,25	4,00	7,25
29/9/17	2,95	4,06	4,25	4,00	7,00
31/10/17	3,08	4,02	4,25	4,00	7,00
30/11/17	3,03	4,02	4,25	4,00	6,75

Obs.: o formato dos gráficos, a partir de uma mesma base de dados, pode sofrer alterações em edições futuras, caso os intervalos sejam alterados em virtude da maior ou menor amplitude da distribuição. Os números nos eixos das abscissas são os pontos centrais de cada intervalo.